

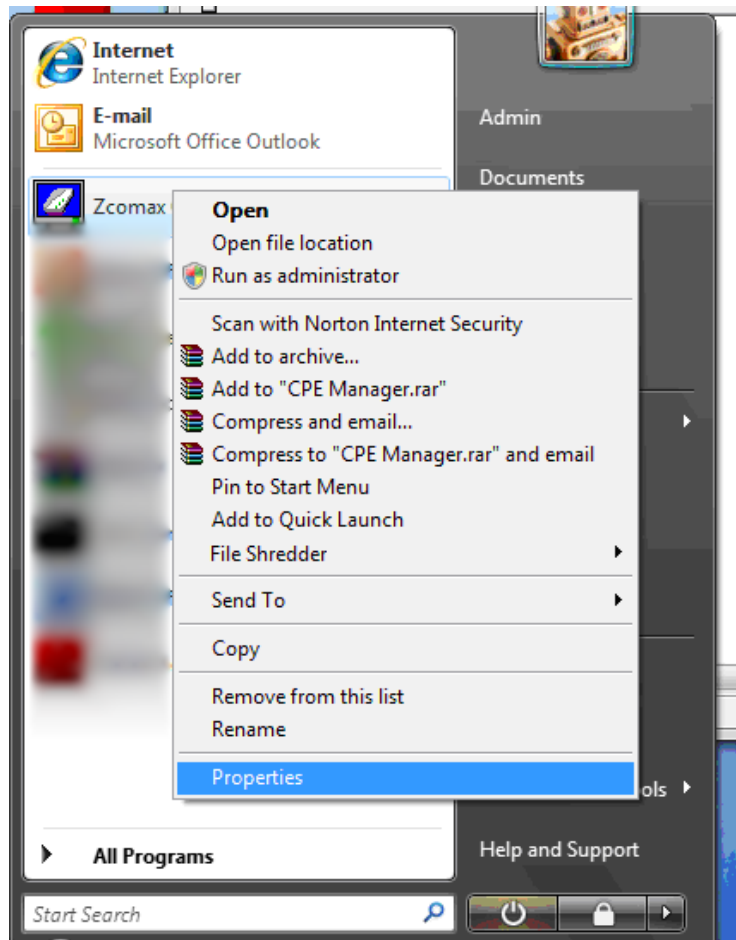
## For Windows Vista Users:

### -Enabling the CPE Utility

By default, the CPE utility will not work on the Windows Vista operating system. To enable the utility, the user must change the compatibility setting to match Windows XP Service pack 2. The purpose of this note is to show how to achieve this. Follow the steps below to change the compatibility mode. Be sure that the CPE Utility is not running when performing these steps.

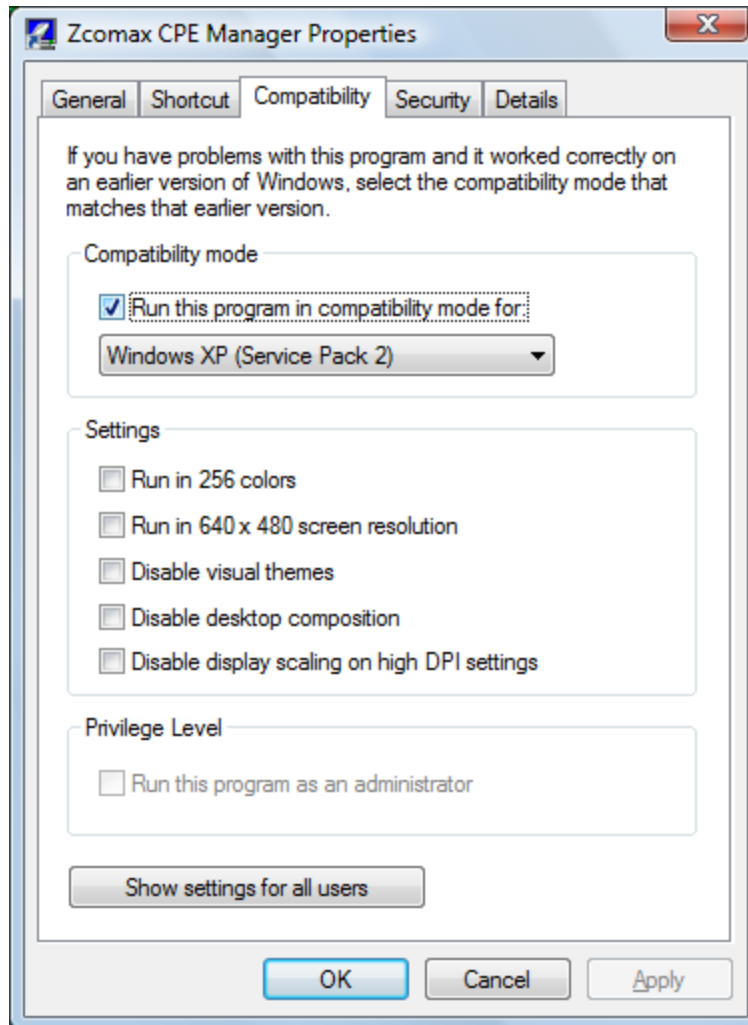
#### Step 1: View the Properties of the CPE Utility

Right click on the CPE utility icon, whether from the desktop or the startup menu.



## Step 2: Change Compatibility to Match Windows XP (Service Pack 2)

Select the Compatibility tab from the Properties window. Click the checkbox, as below, that changes the compatibility mode. Make sure that the drop-down menu displays “Windows XP (Service Pack 2)”, as below. Click the “Apply” button to save the settings and then click “OK” to close the window.



The CPE Utility may now be used as normal.