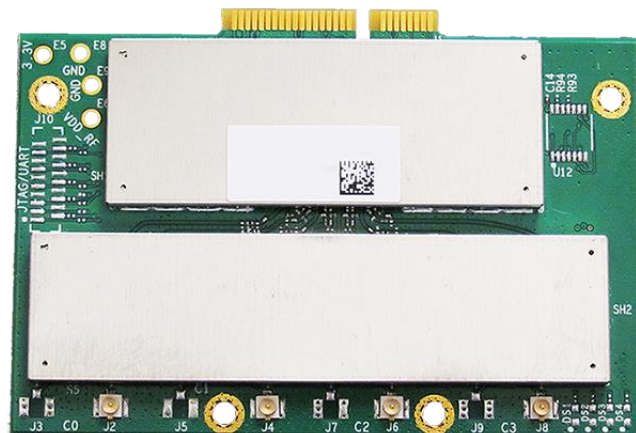


AC-924

Product Specification



IEEE 802.11a/an/ac 4 x 4
PCI Express Mini Card

AC-924 Specifications



Hardware	
Standard	IEEE 802.11a/an/ac
Chipset	Qualcomm Atheros QCA9984
Host Interface	Mini PCI Express
Operating Voltage	DC 3.3V/1A, DC 5.0V/1.7A
Antenna Connector	u.FL compliant connector x 4

Output Power	IEEE 802.11a	IEEE 802.11n	IEEE 802.11ac	
	26dBm	26dBm	VHT20,MCS0: 28dBm	VHT40,MCS9: 22dBm
			VHT40,MCS0: 28dBm	VHT80,MCS9: 21dBm
			VHT80,MCS0: 28dBm	
			VHT20,MCS7: 26dBm	
			VHT40,MCS7: 26dBm	
			VHT80,MCS7: 25dBm	

Rx Sensitivity	IEEE 802.11a	IEEE 802.11n	IEEE 802.11ac	
	6Mbps: -98dBm	HT20,MCS0: -97dBm	VHT20,MCS0: -96dBm	VHT20,MCS8: -72dBm
	54Mbps: -80dBm	HT40,MCS0: -94dBm	VHT40,MCS0: -93dBm	VHT40,MCS8: -68dBm
		HT20,MCS7: -79dBm	VHT80,MCS0: -90dBm	VHT80,MCS8: -65dBm
		HT40,MCS7: -77dBm	VHT20,MCS7: -74dBm	VHT40,MCS9: -66dBm
			VHT40,MCS7: -72dBm	VHT80,MCS9: -63dBm
			VHT80,MCS7: -69dBm	

Modulation	IEEE 802.11a (OFDM)	IEEE 802.11n (OFDM)	IEEE 802.11ac (OFDM)	
	QAM-64	QAM-64	QAM-256	
	QAM-16	QAM-16	QAM-64	
	QPSK	QPSK	QAM-16	
	BPSK	BPSK	QPSK	
			BPSK	

Operating Frequency	FCC	CE
	5150~5250MHz	5150~5250MHz
	5250~5350MHz	5250~5350MHz
	5470~5725MHz	5470~5725MHz
	5725~5850MHz	

Security	
Standard	IEEE 802.1x security standard
Authentication	WEP / WPA / WPA2
Encryption	64-bit and 128-bit WEP / WPA (TKIP) / WPA2 (AES)

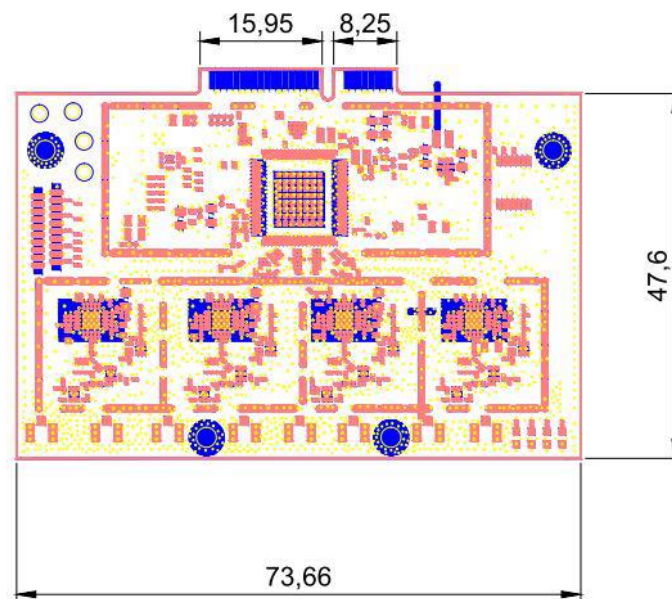
AC-924 Specifications

Physical

Dimension	73.66mm (W) x 50.8mm (L)
Weight	≤ 15g

Environmental

Operating Temperature	-40 ~ +70°C
Operating Humidity	10 ~ 90% relative humidity non-condensing
Storage Temperature	-40 ~ +70°C
Storage Humidity	10 ~ 90% relative humidity non-condensing
Green	RoHS/REACH compliant
Warranty	12 months

Dimensions Outline

AC-924 Specifications



Pin Definition					
GPIO	Description	GPIO	Description	GPIO	Description
1	WAKE#	19	Reserved	37	Reserved
2	3.3V	20	WLAN Disable	38	Reserved
3	Chip power down Control#	21	GND	39	Reserved
4	GND	22	RESET#	40	GND
5	Reserved	23	PERn0	41	Reserved
6	Reserved	24	3.3V	42	Reserved
7	CLKREQ#	25	PERp0	43	GND
8	Reserved	26	GND	44	WLAN LED
9	GND	27	GND	45	5V
10	Reserved	28	Reserved	46	Reserved
11	REFCLK-	29	GND	47	5V
12	Reserved	30	Reserved	48	Reserved
13	REFCLK+	31	PETn0	49	5V
14	Reserved	32	Reserved	50	GND
15	GND	33	PETp0	51	5V
16	Reserved	34	GND	52	3.3V
17	Reserved	35	GND		
18	GND	36	Reserved		

Copyright © 2016 Zcomax Technologies Inc.

All rights reserved. No part of this publication may be reproduced, distributed, or transmitted in any form or by any means, including photocopying, recording, or other electronic or mechanical methods, without prior written permission

Zcomax Technologies, Inc. 3855 La Palma Ave., Suite 240, Anaheim, CA 92807

Tel: (562) 926-4588 Fax: (562) 926-7885

Web: www.zcomax.com Email: sales@zcomax.com

DS-AC-924 1.1 10924 161214